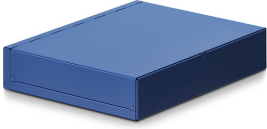


Data sheet Product TOL 230 ...



Cases>Shell-, extruded assembled cases, desk consoles and Euro cases

contents of delivery:

1 = 1 x top shell; 2 = 1 x bottom shell; 3 = mounting material

- universal, flexible and robust case made of 1 mm thick galvanised sheet steel
- outer surfaces matt powder-coated, available in three standard colours
- quick mounting of the top shell by means of a simple screw connection on the rear side
- M3 threaded bushes pressed into the bottom shell for mounting a PCB or mounting plate
- improved shielding against electromagnetic interference - suitable top-hat rail clamp **KL 35 ...** on request
- optionally with ventilation slots on the top and bottom shells - also available as customised version "**TOL SL ...**"

Features

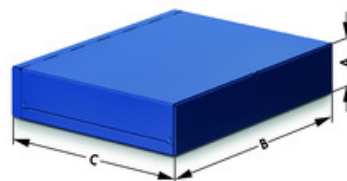
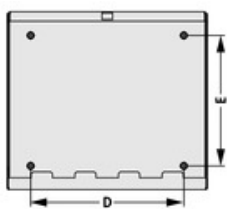
case type:

Blechgehäuse

surface:

- ultramarine blue (similar to RAL 5002)
- silver grey (similar to RAL 7001)
- pearl white (similar to RAL 1013)

Technical Drawing



A:	44 mm
B:	230 mm
C:	180 mm
D:	180 mm
E:	130 mm
thread sleeve height:	5

Further Information

possible dimensions:

art. no.	dim. [mm]					thread sleeve height
	A	B	C	D	E	
TOL SL ...	25 ... 100	80 ... 300	80 ... 300	max. B - 20	max. C - 40	5/7/9

please indicate with your order:

art. no.	dim. [mm]					thread sleeve height
	A	B	C	D	E	
TOL SL ...						

please indicate:

... surface	... ventilation slots (optional)
UL = ultramarine blue (sim. RAL 5002)	ML = ventilation slots
SG = silver grey (sim. RAL 7001)	
PW = pearl white (sim. RAL 1013)	

Fischer Elektronik GmbH & Co. KG
DEUTSCHLAND • GERMANY • ALLEMAGNE

Nottebohmstraße 28
58511 Lüdenscheid

Telefon +49 2351 435-0
Telefax +49 2351 45754

info@fischerelektronik.de
www.fischerelektronik.de