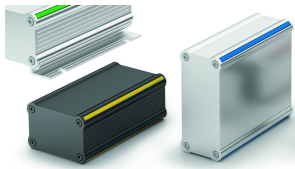


Data sheet Product TUS 84 39 ...

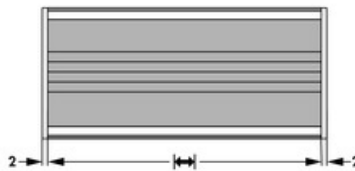
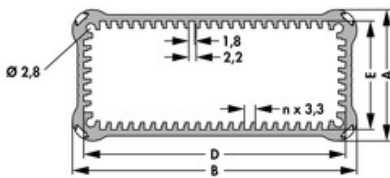


Cases>Tube cases
1 = 1 x Basisprofil (**GB 88**)
2 = 2 x Deckelplatte (2 mm)
3 = 4 x Kunststoff-Designleiste
4 = Montagematerial

Features

length:	50 mm / 80 mm / 100 mm / 120 mm / 160 mm / 200 mm / 220 mm
surface:	<ul style="list-style-type: none"> • black anodised • natural colour anodised • case profile SA, cover panels ME
fixing strap (optional):	with fixing straps
colour design strip:	<ul style="list-style-type: none"> • sulphur yellow (similar to RAL 1016) • pure orange (similar to RAL 2004) • carmine red (similar to RAL 3002) • sky blue (similar to RAL 5015) • bright green (similar to RAL 6038)

Technical Drawing



height:	39 mm
width:	84.5 mm
D:	77.8 mm
E:	32.3 mm