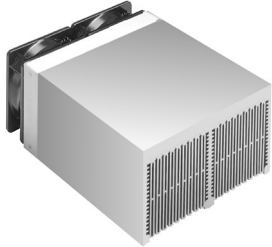


Data sheet Product LA_V15_

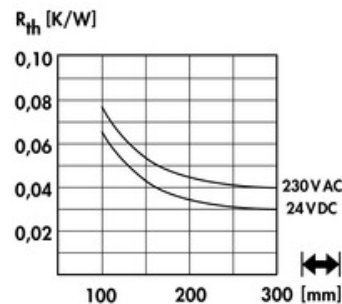
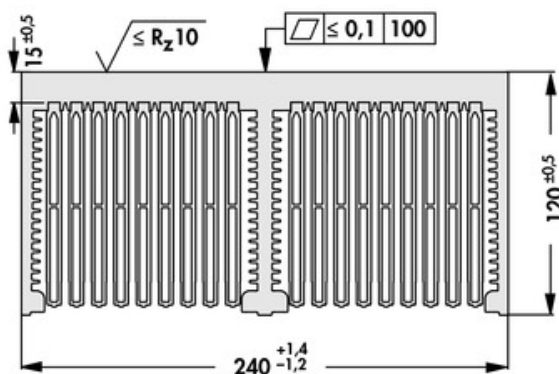


Cooling aggregates > Cooling aggregates with axial fan
240 x 120 mm, with axial fan and air-flow chamber

Features

width:	240 mm
height:	120 mm
length:	100 mm / 150 mm / 200 mm / 250 mm / 300 mm / 400 mm
thermal resistance:	0.078 - 0.03 K/W
surface:	<ul style="list-style-type: none"> • raw degreased aluminium • mounting area(s) milled flat
operating voltage of the fan motor:	<ul style="list-style-type: none"> • 24 V DC • 230 V AC

Technical Drawing



Fan**ebmpapst, kugelgelagert, 24 V DC**

type:	ebmpapst 4184NXH
dimensions:	119x119x38 mm
tension:	24 V DC
power inout:	11 W
max. air volume:	237 m³/h
temperature range:	-30°C ... +70°C
speed:	4,400 min⁻¹
noise level:	57 dB(A)
weight:	390 g
failure rate (L ₁₀):	L₁₀ < 70,000 h (40°C)

ebmpapst, kugelgelagert, 230 V AC

type:	ebmpapst 4656N
dimensions:	119x119x38 mm
tension:	230 V AC
power inout:	19 W
max. air volume:	160 m³/h
temperature range:	-40°C... +85°C
speed:	2,650 min⁻¹
noise level:	47 dB(A)
weight:	550 g
failure rate (L ₁₀):	L₁₀ < 37,500 h (40°C)