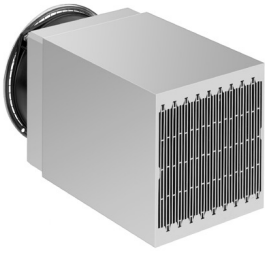




Data sheet Product LA_V24_

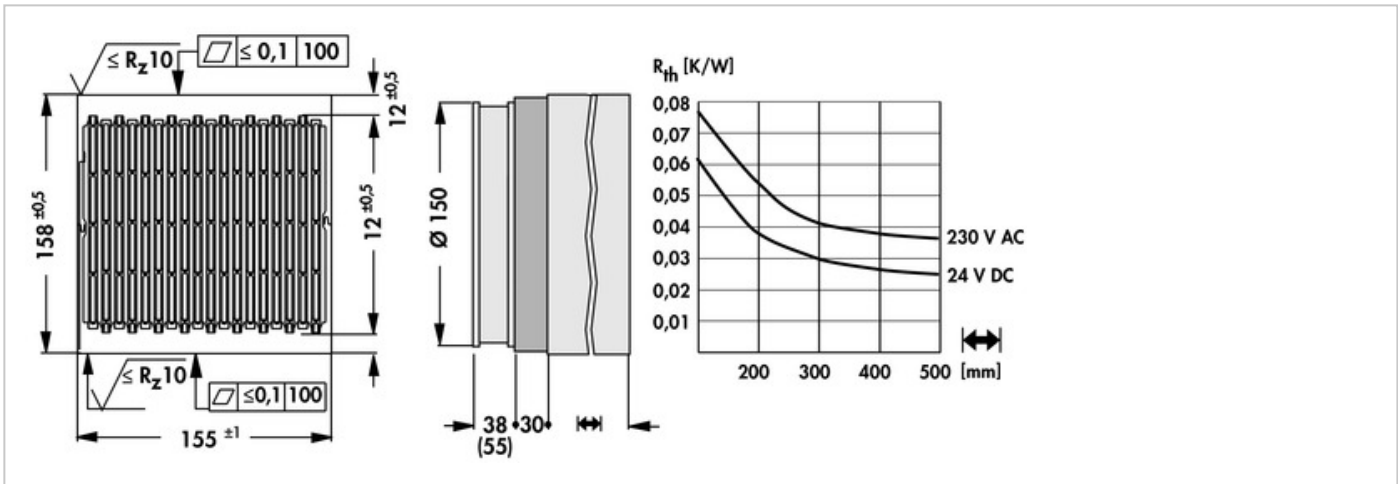


Cooling aggregates>Cooling aggregates with axial fan
155 x 158 mm, with axial fan and air-flow chamber

Features

width:	155 mm
height:	158 mm
length:	200 mm / 300 mm / 400 mm
thermal resistance:	0.078 - 0.025 K/W
surface:	<ul style="list-style-type: none"> raw degreased aluminium mounting area(s) milled flat
operating voltage of the fan motor:	<ul style="list-style-type: none"> 24 V DC 230 V AC

Technical Drawing



Fan**ebmpapst, kugelgelagert, 24 V DC**

type:	ebmpapst, ball bearing, with grid
dimensions:	Ø150x38 mm
tension:	24 V DC
power inout:	19 W
max. air volume:	420 m³/h
temperature range:	-25°C... +72°C
speed:	3,350 min⁻¹
noise level:	59 dB(A)
weight:	620 g
failure rate (L ₁₀):	L₁₀ < 75,000 h (40°C)

ebmpapst, kugelgelagert, 230 V AC

type:	ebmpapst, ball bearing, with grid
dimensions:	Ø150x55 mm
tension:	230 V AC
power inout:	47 W
max. air volume:	380 m³/h
temperature range:	-30°C... +60°C
speed:	2,700 min⁻¹
noise level:	60 dB(A)
weight:	1100 g
failure rate (L ₁₀):	L₁₀ < 40,000 h (40°C)