

Suitable for reflow soldering



STH® for reflow soldering



MSL1



General data

Dimensional class: high
Standard colour: green for wave soldering, black for reflow soldering
Pitches: metric 15 mm (.591 in)
Screw dimension: M5
Recommended/highest tightening torque: 2.1/2.5 Nm (18.59/22.13 lbf-in)
PCB thickness: max. 2.4 mm (.094 in)
PCB hole diameter: min. 1.6 mm (.063 in)
Stripping length: 18 mm (.71 in)
Operating temperature range: -40 °C ÷ +130 °C (-40 °F ÷ +266 °F)
STH operating temperature range: -40 °C ÷ +130 °C (-40 °F ÷ +266 °F)
Contact resistance: <15 mΩ
Insulation resistance: >10⁹ Ω (500V DC)
Insulating material group: I (CTI ≥ 600V)

Certifications

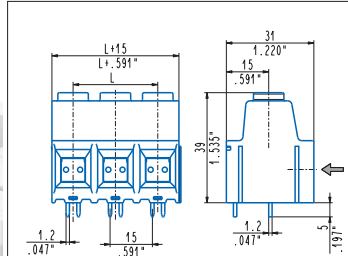
135 A

UL (n. E167473)
 600 V - 135 A factory wiring (130 A field wiring) - 20±1 AWG - 2.5 Nm

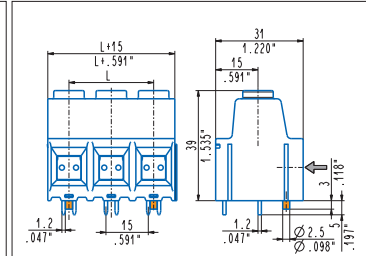
Data according to

IEC EN 60947-7-4
 1000 V - 125 A - T 110 - 35 mm² solid (115 A - 25 mm² stranded)

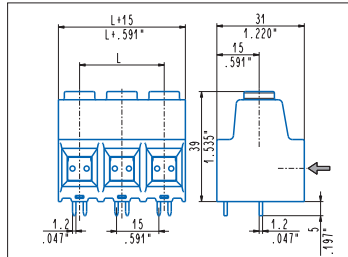
Application values for end-use equipment have to be in accordance to norms and applicable to it. The certifications of some product's versions could be pending, for more detailed and updated data please refer to our web site www.sauro.net or your representative Sales Manager



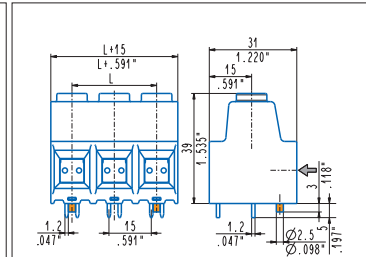
Straight, modular
 MPP_DQ0 2÷8 poles, 15 mm .591" pitch
 MPPH_DQ0-ON 2÷8 poles, 15 mm .591" pitch



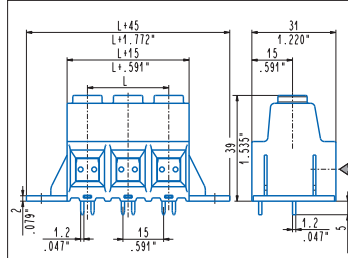
Straight, modular, pegs
 MPP_DQ0-0000P 2÷8 poles, 15 mm .591" pitch
 MPPH_DQ0-0N00P 2÷8 poles, 15 mm .591" pitch



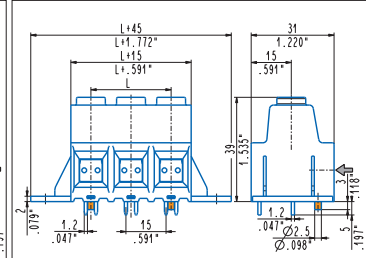
Straight, side stackable
 MPP_DQ0 2÷8 poles, 15 mm .591" pitch
 MPPH_DQ0-ON 2÷8 poles, 15 mm .591" pitch



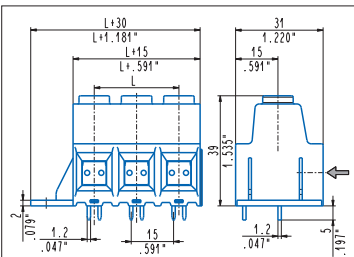
Straight, side stackable, pegs
 MPP_DQ0-0000P 2÷8 poles, 15 mm .591" pitch
 MPPH_DQ0-0N00P 2÷8 poles, 15 mm .591" pitch



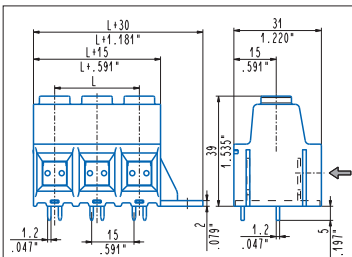
Straight, mounting flanges
 MPP_DVQ 1÷8 poles, 15 mm .591" pitch
 MPPH_DVQ-ON 1÷8 poles, 15 mm .591" pitch



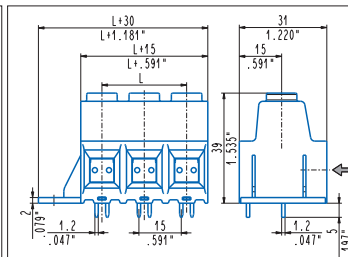
Straight, mounting flanges, pegs
 MPP_DVQ-0000P 1÷8 poles, 15 mm .591" pitch
 MPPH_DVQ-0N00P 1÷8 poles, 15 mm .591" pitch



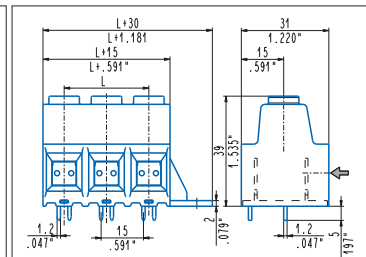
Straight, modular, mounting flanges
 MPP_DQ0-00S 1÷8 poles, 15 mm .591" pitch
 MPPH_DQ0-0NS 1÷8 poles, 15 mm .591" pitch



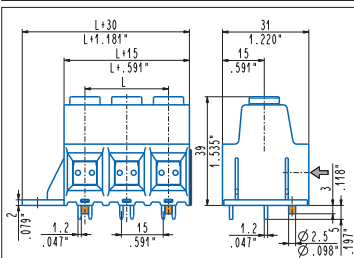
Straight, modular, mounting flanges
 MPP_DQ0-00D 1÷8 poles, 15 mm .591" pitch
 MPPH_DQ0-0ND 1÷8 poles, 15 mm .591" pitch



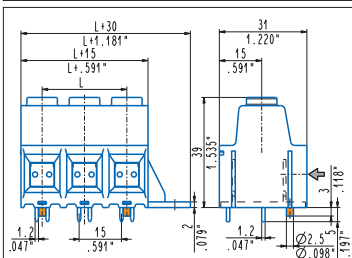
Straight, side stackable, mounting flanges
 MPP_DQ0-00S 1÷8 poles, 15 mm .591" pitch
 MPPH_DQ0-0NS 1÷8 poles, 15 mm .591" pitch



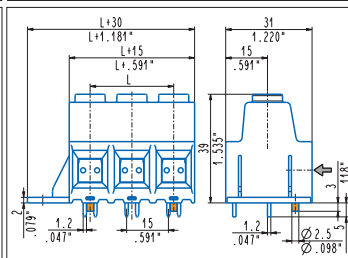
Straight, side stackable, mounting flanges
 MPP_DQ0-00D 1÷8 poles, 15 mm .591" pitch
 MPPH_DQ0-0ND 1÷8 poles, 15 mm .591" pitch



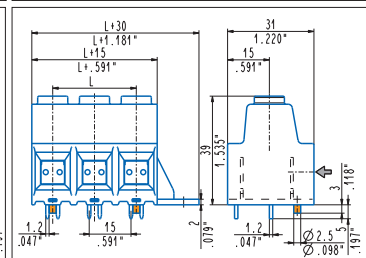
Straight, left mounting flanges, pegs
 MPP_DQ0-00SOP 1÷8 poles, 15 mm .591" pitch
 MPPH_DQ0-0NSOP 1÷8 poles, 15 mm .591" pitch



Straight, right mounting flanges, pegs
 MPP_DQ0-00DOP 1÷8 poles, 15 mm .591" pitch
 MPPH_DQ0-0NDOP 1÷8 poles, 15 mm .591" pitch



Straight, side stackable, flanges, pegs
 MPP_DQ0-00SOP 1÷8 poles, 15 mm .591" pitch
 MPPH_DQ0-0NSOP 1÷8 poles, 15 mm .591" pitch



Straight, side stackable, flanges, pegs
 MPP_DQ0-00DOP 1÷8 poles, 15 mm .591" pitch
 MPPH_DQ0-0NDOP 1÷8 poles, 15 mm .591" pitch